

Hello



100%



2021

Fri, Jan 1

OMG
Music

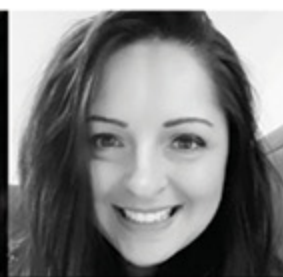


Catalog





WINSTON #1



Eglash



Mark



April



brett@omgmusic.com
SALES:800-675-2501 x805



ben@omgmusic.com
SALES:800-675-2501 x804



larry@omgmusic.com
SALES:800-675-2501 x808



ken@omgmusic.com
SALES:800-675-2501 x814



ConnieJo



Jon



wendy@omgmusic.com
SALES:800-675-2501 x817



Amy



Bridget



mike@omgmusic.com
SALES:800-675-2501 x813



bill@omgmusic.com
SALES:800-675-2501 x816



darren@omgmusic.com
SALES:800-675-2501 x807



piers@omgmusic.com
SALES:800-675-2501 x815



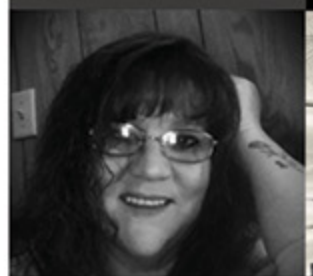
Danny



Pete



Caroline



Sherri



Mike



Connie



David



Lois



TABLE OF CONTENTS

PAGE

4	Lock-It Poly Pro
5	Lock-It Crushed Velvet
6	Lock-It Bob Masse Sublimation
8	Lock-It 2.75" Garment Leathers
9	Lock-It 2" Cotton
10	Lock-It 2" Poly
11	Lock-It 2" Retro Jacquards
14	Headstock Loop Peruvian Wool and Suede Ukulele Straps
15	Leather Braided Ukulele Straps
16	Flex and Non-Flex Straps
17	Patent Leather
18	Suede with Embroidery Straps
19	Bone Leather Diamonds & Crosses
20	Peruvian Inca Fabric with Torto
21	Classic Music Notes
22	Stars & Bolts
25	Leather X
26	Embroidered Suede
27	Diamonds
28	Herringbone Cotton with Wool & Tort-o Tri-glide
30	Crosses
31	Distressed
32	USA and Checkerboard Sublimation
34	ACE
37	Limited Paisley Leather
38	Picador Woven
40	Leather with Tort-o Tri-glide
41	Herringbone Cotton with Suede & Tort-o Tri-glide
42	Basic Cotton with Tort-o Tri-glide
43	Woven with Pick Pocket
45	Herringbone Cotton with Suede
46	Quilted
47	Floral
48	3.5" Capri Leather & Suede
50	50's Style
51	Variety Leathers
52	Sheepskin Padded & Medallion Leather
53	Variety Leathers
54	2" and 2.5" Capri Leather
56	2" and 2.5" wide Capri Suede
58	2" and 2.5" American Buffalo Leather
59	3.5" Double Layer Foam Core Garment Leather Padded

PAGE

60	2" Rolled Edge Leather and Suede
61	2" Crushed Velvet
62	2" Sparkle Vinyl
63	2" Vintage Jacquard
63	2" Vintage Jacquard
68	2" Variety Cotton and Nylon
69	2" Sublimation
73	2" U.S. Army Sublimation
74	2" U.S. Army Embroidered Cotton and Picks
75	2" Peruvian Andean and Inca
76	2" Variety Cotton
77	2" Guitar Straps USA Variety Straps
78	2" Variety Cotton Embroidery
82	2", 2.5" and 3.5" Leather
83	2" Guitar Straps USA Variety leather straps
84	2" Deluxe Cotton
85	2" Seat Belt
86	2" Basic Cotton
87	2" USA Poly
88	2" Imported Poly Vegan MicroFiber Ends
89	Canvas Uke Bags
90	Peruvian Andean and Inca Uke Bags and Straps
91	Kid and Ukulele
92	Variety Mandolin
93	Variety Mandolin Braided
94	Capri Suede Banjo
95	Capri Leather Banjo
96	Variety Banjo
98	Saxophone Straps
99	The Rock Slide
103	Twisted Wood Ukuleles
112	Shaka Ukuleles
113	Sherrin's Threads
114	Henry Heller Gig Bags
119	Henry Heller Imported Stands & Alchemy Picks
120	D'Andrea
126	Spider Capo & D'Andrea Tone Pins & Strap Buttons
127	Rotosound

HOT NEW
MODELS!!!

Henry Heller

GENUINE
LOCK-IT®
GUITAR STRAPS
PATENTED

MADE IN U.S.A.

- 2" WIDE
- POLY PRO IN
- OUR FAVORITE
- BLACK AND
- SILVER
- SMALL CHECKER
- PATTERN
- built in
- locks
- leather ends
- no guitar
- mods
- Made in USA

PATENTED
LOCK-IT®
GUITAR STRAPS
No. 7818851
MADE IN U.S.A.

LIS-009P2-SLCHK



**HOT NEW
MODELS!!!**

Henry Heller

- 2" WIDE CRUSHED VELVET
WITH BLACK POLY BACKING
 - built in locks
 - leather ends
 - no guitar mods
- Made in USA

GENUINE
LOCK-IT®
GUITAR STRAPS
PATENTED

MADE IN U.S.A.



LIS
-018CV2
-BLK

LIS
-021CV2
-PUR

LIS
-073CV2
-SLV

LIS
-020CV2
-BLU

LIS
-019CV2
-RED



MADE IN U.S.A.

- 2" wide
- Bob Masse Series
- Authentic 1960's
- Artwork
- built in locks
- leather ends
- no guitar mods
- Made in USA



LIS-031-BM1

LIS-032-BM2

LIS-033-BM3



- 2" wide
- Bob Masse Series
- Authentic 1960's
- Artwork
- built in locks
- leather ends
- no guitar mods
- Made in USA

LIS-034-BM4

LIS-035-BM5

LIS-037-BM7



- 2.75" wide Leather
 - built in locks
 - leather ends
 - no guitar mods
- Made in USA



LIS-038L275-BLK

LIS-039L275-BRN



- 2" wide Cotton
- built in locks
- leather ends
- no guitar mods
- Made in USA



LIS-048C2-
BRN/BRN

LIS-049C2-
NAT/BRN

LIS-050C2-
OLV/BRN

LIS-051C2-
NVYBLU

LIS-013C2
-BLK



- 2" wide Poly
 - built in locks
 - leather ends
 - no guitar mods
- Made in USA



LIS 001

LIS 002

LIS 004

LIS 006

LIS 007

LIS 010

LIS 012

- 2" wide Jacquard
 - built in locks
 - leather ends
 - no guitar mods
- Made in USA



LIS-061-MT

LIS-062-BC

LIS-063-CB

LIS-064-LC

LIS-065-PR



- 2" wide Jacquard
 - built in locks
 - leather ends
 - no guitar mods
- Made in USA



LIS-066-SO

LIS-067-ML

LIS-068-TR

LIS-069-MR



- 2" wide Jacquard
 - built in locks
 - leather ends
 - no guitar mods
- Made in USA



LIS-070-CC

LIS-071-EI

LIS-072-RD



HP21C-01

HP21C-02

HP21C-03

HP21C-04

HP21C-05

■ Henry Heller
Ukulele straps
made with 3/8" wide
authentic Peruvian
cotton, a leather
headstock loop that
gets fed under the
strings into a pull
thru slip knot.
Finished with a
suede adjustment
tab.
Adjusts to max
length of 49".



HP21B-BLK

HP21B-BRN

HP21B-TT

■ Henry Heller Ukulele strap made with leather braiding, a leather braided headstock loop that gets fed under the strings into a pull thru slip knot. Finished with a basket weave perimeter stitching around the edging of the leather adjustment tab. Available in black, brown and a two-tone black and brown.

**HOT NEW
MODELS!!!**



■ **HPFLEX-BLK**
2.75" wide specially engineered thick elastic with just a touch of flex to take the weight off your shoulder while maintaining complete control and playability of your heavy guitar or bass. Appointed with black suede ends and extends to max length of 58".



■ **HPNFX-BLK**
2.75" wide specially engineered thick polyester weave backed with a velvety suede to match and extends to max length of 58"



■ Close up of the Henry Heller sewn on pick pocket on the underside of both the HPFLEX and the HPNFX pictured above.

**HOT NEW
MODELS!!!**

■ Henry Heller
2.5" wide
luxurious and
eye-catching
patent leather
guitar strap
with a matching
suede underside
and a sewn in
pick pocket.
Extends to max
length of 58"



HPDL25P-BLK

HPDL25P-RED

**HOT NEW
MODELS!!!**



HP25ESCR-01

HP25ESCR-02

HP25ESCR-03

■ Henry Heller
2.5" wide
velvety suede
guitar strap
with
contemporary
embroidered
cross design.
Adjusts to 58"
in max length.



**HOT NEW
MODELS!!!**

Henry Heller



HP23D-03

- Henry Heller
2" wide
bone color
garment leather
guitar strap
with a gold
classic diamond
design.
Smooth natural
glove leather
underside.
Extends to 58"
in max length.



HPCOC-01

- Henry Heller
2.5" wide
bone color
garment leather
guitar strap
with a gold
cross design
backed with a
dark tan suede
underside
and extends
to 58" in
max length.



**HOT NEW
MODELS!!!**

Henry Heller

■ 2" wide
Peruvian Inca
fabric with
sand glove
leather backing
with
tortoise glide and
suede ends.
Adjusts to
58" in max
length
available in
reggae and
rustic
as pictured



HPSEDX-03



HPSEDX-05



■ Henry Heller 3" wide garment leather guitar strap with timeless and classic music notes. Backed with a natural suede underside with our signature flat sewn on pick pocket. If there was a guitar strap hall of fame this strap would be in it. Adjusts to max length of 58".

HP21MN-01

HP21MN-02

HP21MN-03



- Sleek and slim
2" wide
garment leather
with Bowiesque
Stars and Bolts and
soft leather backing.
Adjustable to max
length of 54"

Small-batch & Handmade

HPST
-SR

HPST
-PB

HPDB
-SR



- Sleek and slim
2" wide Off-white
garment leather with
Gold Bowiesque
Stars and Bolts
and soft leather backing.
Adjustable to max
length of 54"

Small-batch & Handmade



HPST-BG

HPDB-BG



- Sleek and slim
2" wide garment
leather with Bolts
and Stars
and soft leather
backing.
Adjustable to
max length of 54"
Small-batch & Handmade

HPDB-SL

HP23STBK

HPDB-BK

HP23STWH



- Henry Heller
2.5" wide
double layer of
premium suede with
leather X's.
Adjusts to a max
length of 58".
Small-batch & Handmade

HPDG-01

HPDG-02

HPDG-03



■ **Henry Heller**

2.75" wide strap.

A double layer of premium tan suede with finely detailed embroidery of original artwork you've come to find only with Henry Heller.

Adjusts to max length of 58". Small-batch & Handmade



HP25ES-01

HP25ES-02

HP25ES-03

HP25ES-04

HP25ES-05



- **Henry Heller**
2" guitar straps with cut out diamonds with tight concise stitched borders and a soft glove leather underside. This series extends to a max length of 54".

Small-batch & Handmade

HP23D-01

HP23D-02

HP23DTW



■ Henry Heller
2" wide soft hand
PURE 100% Herringbone
cotton with a
complementary wool
strip sewn down the
center. Tort-o
tri-glide and suede
ends. Adjusts to 58"
max length.

Small-batch & Handmade



THE ORIGINAL
TORT-O™
TRIGLIDE

HPWS-01

HPWS-02



- Henry Heller
2" wide soft hand
PURE 100% Herringbone
cotton with a
complementary wool
strip sewn down the
center. Tort-o
tri-glide and suede
ends. Adjusts to 58"
max length.

Small-batch & Handmade



THE ORIGINAL
TORT-OTM
TRIGLIDE

HPWS-03

HPWS-04



- **Henry Heller**
2" guitar straps with cut out crosses with tight concise stitched borders and a velvety suede underside . This series extends to a max length of 58".

Small-batch & Handmade

HP25CR-01

HP25CR-02



- **Henry Heller**
2.5" wide double layer of garment leather. The top of the strap with a distressed finish and a black glove underside. Max length of 54".

HP25NS-BLK

HP25NS-BRN

**HOT NEW
MODELS!!!**



**HSUB2
-62**



**HSUB2
-63**



**HSUB2
-64**

■ Henry Heller
2" wide
sublimation
guitar straps.
Extend to max
length of 62"



■ Henry Heller 2" wide sublimation printed straps with micro fiber reinforced ends. All models extend to an extra long 62" in length.



HSUB2-56



HSUB2-57



HSUB2-58



HSUB2-59



HSUB2-60



HSUB2-61



DN-ACE01

DN-ACE02

DN-ACE03

DN-ACE04

DN-ACE05



■ We proudly introduce the new reissue of Ace Brand guitar straps. Originally made in the 1960's and 70's, and worn by your favorite iconic guitar players, these straps are back in production by D'Andrea. With the renewed love and demand shown over these recent years for the original vintage straps, it was a gimme to resurrect these classic models from the stow of your old tattered chipboard case.



DN-ACE10

DN-ACE11

DN-ACE12

DN-ACE13



DN-ACE06

DN-ACE06RED

DN-ACE06BLU

DN-ACE07

DN-ACE08



■ 2" wide
Henry Heller
Special paisley
printed Capri
leather straps
offered for a
limited time.
Adjusts to a
max length
of 54".



PAISLEY BUNDLE: PAIBUN



THE ORIGINAL
TORT-OTM
TRIGLIDE

■ Henry Heller Picador series guitar straps. 2" wide traditionally handwoven fabric sewn to a thick organic woven cotton backing. Smooth torto hardware and chocolate leather ends. Adjustable to 58".

Small-batch & Handmade

HPRU-03

HPRU-05

HPRU-09

HPRU-13



■ Henry Heller Picador series guitar straps. 2" wide traditionally handwoven fabric sewn to a thick organic woven cotton backing. Smooth torto hardware and chocolate leather ends. Adjustable to 58". Small-batch & Handmade

THE ORIGINAL
TORT-OTM
TRIGLIDE



HPRU-01

HPRU-06

HPRU-11

HPRU-02



THE ORIGINAL
TORT-OTM
TRIGLIDE

- Henry Heller 2" wide premium garment leather guitar strap with a smooth glove leather underside on your shoulder. Adjusts to a max length of 62".

HCAP2TR-VBK

HCAP2TR-VBN

THE ORIGINAL

TORT-OTM TRIGLIDE



■ PURE
Herringbone pattern
2" wide soft-hand
100% cotton with a
complimentary sewn on
suede centered stripe,
matching suede ends,
and the new
Henry Heller
ORIGINAL

TORT-OTM TRIGLIDE

tortoise shell
slider adjustment!
Adjusts to a
max length of 62".



HPSS-BLK



HPSS-NAT



HPSS-BRN



HPSS-TAN

THE ORIGINAL
TORT-O™
TRIGLIDE



■ Henry Heller
2" wide cotton
guitar straps
with deluxe sewn on
premium leather ends
and the new
Henry Heller
ORIGINAL

TORT-O™ TRIGLIDE
tortoise shell
slider adjustment!
Adjusts to a
max length of 62".



HCTT
-BRN

HCTT
-TAN

HCTT
-BLK

HCTT
-NAT



■ Henry Heller is paying homage to the hippie fashion of the late 60's and 70's with these rustic 2.5" wide woven straps appointed and backed with velvety suede and a Henry Heller branded pick pocket sewn to the underside. Adjusts to a max length of 58".

HPCWD-TAN

HPCWD-BLK

HPCWD-NAT



■ Henry Heller is paying homage to the hippie fashion of the late 60's and 70's with these rustic 2.5" wide woven straps appointed and backed with velvety suede and a Henry Heller branded pick pocket sewn to the underside. Adjusts to a max length of 58".



HPCWD-TAN

HPCWD-BLK

HPCWD-NAT



■ **PURE**
Herringbone pattern
2" wide soft-hand
100% cotton with a
complimentary
velvety suede
backing and
appointments.
Adjusts to a max
length of 58".

HPCL-BLK

HPCL-BRN

HPCL-TAN

HPCL-NAT



■ Henry Heller 2.5" wide classic custom automotive style quilted garment leather strap with our matching Capri glove leather backing to make a smooth underside on your shoulder. Adjusts to a max length of 58".



HQL-BLK

HQL-BRN

HQL-GRY

HQL-RED



HFL-CHC

HFL-BLK

■ **Henry Heller**
2.5" wide luxurious
western floral
embossed leather
with our matching
Capri glove leather
backing for a smooth
underside on your
shoulder. Adjusts to
a max length of 58".



■ 3.5"
Henry Heller
Capri leather
straps with
soft buttery
Capri suede
backing.



HCAP35
-TAN

HCAP35
-BBR

HCAP35
-VBN

HCAP35
-BRN

HCAP35
-BLK



■ 3.5" Henry Heller
luxurious Capri
suede strap with
soft buttery
Capri suede backing.
Adjusts to a max
length of 54.

HBS35-BLK

HBS35-RST

HBS35-CHC



■ Henry Heller Vintage 50's Artisan series. Garment leather with a sliding shoulder pad, garment leather backed, and finished off with a double stitched perimeter.

HP50
-BLK

HP50
-BRN

HP50
-BON



- 2.5" wide Henry Heller Premium garment leather straps with a smooth velvety sand suede backing finished off with a double stitched perimeter.
Adjustable from 44" to 51.5".



HPDL25
-BOA

HPDL25
-BLK

HPDL25
-VBN

HPDL25
-BLU

- 2.5" Embossed Capri Suede.
Adjustable from 44" to 51.5".

HEF25-BRN

HEF25-BLK



■ Henry Heller 2.5" wide Premium sheepskin padded leather straps and antiqued concho medallion leather straps with a nice double stitched perimeter.

HPWL
-BLK



HPWL
-VBN



HPMED
-BLK



HPMED
-VBN



■ 2.5" Premium Amalfi leather top with our first to market Racer X perforated glove leather backing. Adjustable from 43" to 53"



HPLPR-
BLK-RED



HPLPR-
BLK-BLK



■ Henry Heller 2.5" wide garment leather straps with lightning bolt cut out design. Adjustable from 43" to 53"

HPLB-
BLK



■ 2" and 2.5"
Henry Heller
Capri leather
straps with
soft buttery
Capri suede
backing.

HCAP2P-BLK
HCAP25P-BLK

HCAP2P-TAN
HCAP25P-TAN

HCAP2-BLU
HCAP25-BLU

HCAP2-RED
HCAP25-RED

HCAP2-ORG
HCAP25-ORG

HCAP2-WHT
HCAP25-WHT



■ 2" and 2.5"
Henry Heller
Capri leather
straps with
soft buttery
Capri suede
backing.

HCAP2-BLK
HCAP25-BLK

HCAP2-CHC
HCAP25-CHC

HCAP2-BBR
HCAP25-BBR

HCAP2-VBN
HCAP25-VBN

HCAP2-MAH
HCAP25-MAH

HCAP2-BRN
HCAP25-BRN

HCAP2-TAN
HCAP25-TAN



■ Henry Heller
Capri Suede straps
with soft nubuck
backing.
Adjustable from
44" to 51.5".
Available in
2", 2.5" and 3.5" wide.

HBS2-TRQ
HBS25-TRQ

HBS2-BLU
HBS25-BLU

HBS2-PUR
HBS25-PUR

HBS2-ORG
HBS25-ORG

HBS2-RED
HBS25-RED



■ Henry Heller
Capri Suede straps
with soft nubuck
backing.
Adjustable from
44" to 51.5".
Available in
2", 2.5" and
3.5" wide.

HBS2-CHC
HBS25-CHC

HBS2-HNY
HBS25-HNY

HBS2-RST
HBS25-RST

HBS2-BLK
HBS25-BLK

HBS2-BRG
HBS25-BRG

HBS2-BRN
HBS25-BRN



■ **Henry Heller**
2" and 2.5" wide
American Buffalo leather
straps. Super-soft,
supple and thick leather
that provides that little
bit of extra comfort.
Completing the look with
a finished off perimeter
stitching.
Adjustable to
52" in length.

HAB2-BLK
HAB25-BLK

HAB2-BRN
HAB25-BRN

HAB2-CHC
HAB25-CHC

HAB2-NAT
HAB25-NAT



■ 3.5 " wide
Classic Henry Heller
thick foam core padded
Capri glove leather
guitar strap with a
garment leather underside
that adjusts to
a max length of 53".



HPAD35-1



HPAD35-8



HPAD35-9



■ 2" Capri suede finished with rolled edges and a smooth leather backing for the easy slide on the shoulder. Adjusts to 54"

HPIPS
-BLK



HPIPS
-CHC



HPIPS
-SND



■ 2" Amalfi leather finished with rolled edges and a smooth leather backing for the easy slide on the shoulder. Adjusts to 54"

HPIPL-BLK



HPIPL-BRN



■ Henry Heller
2" wide
crushed velvet
guitar strap
with our
signature
series
riveted ends.
Adjusts to a
max length
of 62".

HCV-BLK

HCV-RED

HCV-PUR

HCV-SLV

HCV-BLU



■ Henry Heller 2" ultra cool mother of pearl and sparkle vinyl. Backed with a smooth nylon and outfitted with deluxe tuxedo leather ends. Adjustable from 45" to 59.5" using the tri-glide adjustment tail piece.

HMOD2-05

HMOD2-06

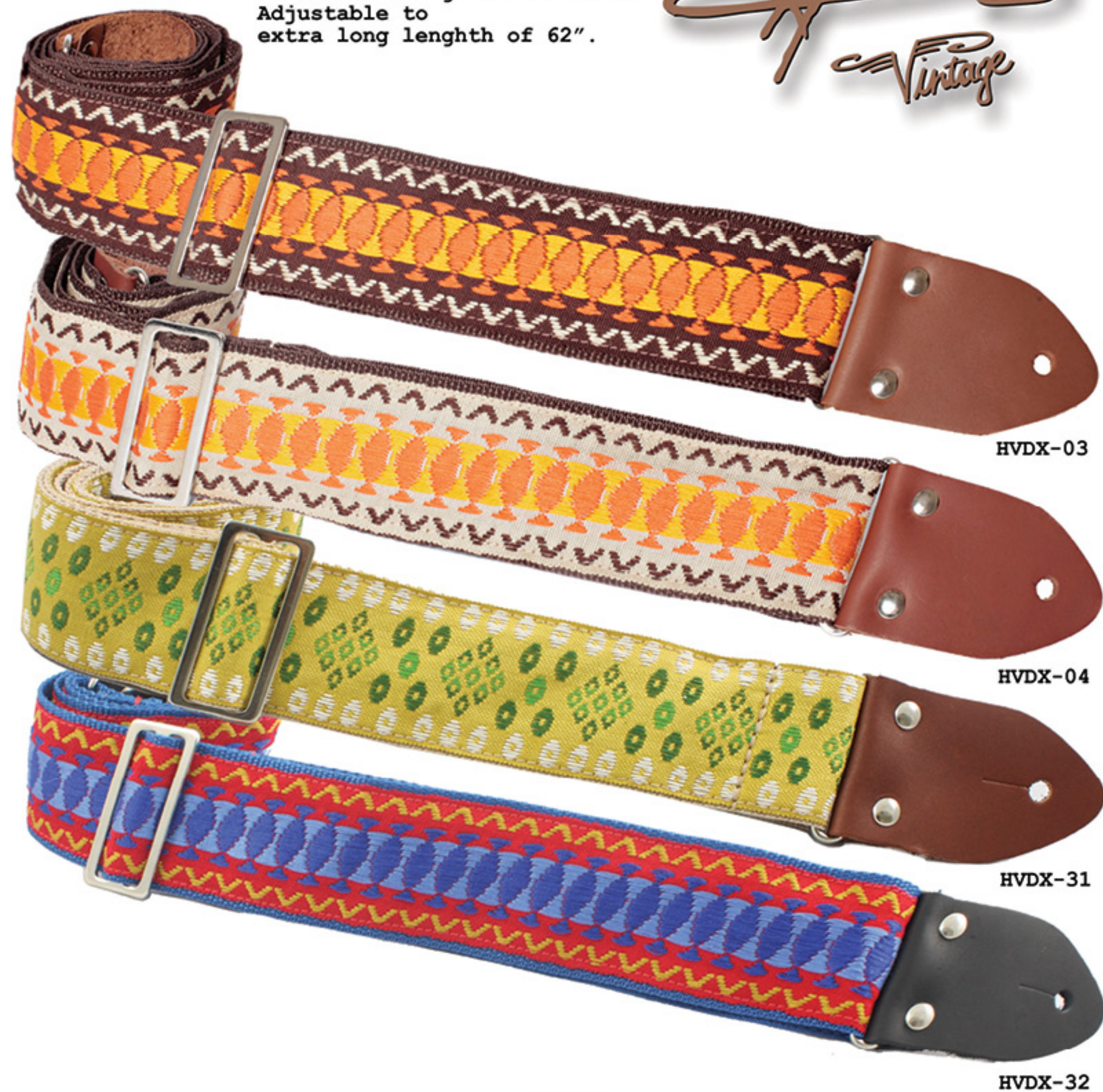
HMOD2-07

HMOD2-08



- 2" assorted Henry Heller Vintage and Fashion Cotton with riveted vintage style leather ends and metal tri-glide hardware. Adjustable to extra long length of 62".

Heller
Vintage



HVDX-03

HVDX-04

HVDX-31

HVDX-32



■ 2" deluxe jacquards with nylon backing, tri-glide adjustment and riveted vintage style leather ends. Adjustable to extra long length of 62"



HJQ2
-39



HJQ2
-40



HJQ2
-41



HJQ2
-42



HJQ2
-37



HJQ2
-38



■ 2" deluxe jacquards with nylon backing, tri-glide adjustment and riveted vintage style leather ends. Adjustable to extra long length of 62"



HJQ2-21

HVDX-22

HJQ2-23

HJQ2-10

HJQ2-45



■ 2" deluxe jacquards with nylon backing, tri-glide adjustment and riveted vintage style leather ends. Adjustable to extra long length of 62"



HJQ2-01

HJQ2-02

HJQ2-08

HVDX-01



■ 2" deluxe jacquards with nylon backing, tri-glide adjustment and riveted vintage style leather ends. Adjustable to extra long length of 62"



HJQ2-28

HVDX-43

HJQ2-44

HJQ2-09

HJQ2-19



■ 2" assorted
Henry Heller Vintage
& Fashion cotton with
riveted vintage style
leather ends.
Adjustable to
62" in length.





■ Henry Heller 2" wide sublimation printed straps with micro fiber reinforced ends. All models extend to an extra long 62" in length.



HSUB2-45



HSUB2-46



HSUB2-47



HSUB2-48



HSUB2-49



HSUB2-54



HSUB2-55



■ Henry Heller 2" wide sublimation printed straps with micro fiber reinforced ends. All models extend to an extra long 62" in length.



HSUB2-43



HSUB2-44



HSUB2-50



HSUB2-51



HSUB2-52



HSUB2-53



■ Henry Heller 2" wide sublimation printed straps with micro fiber reinforced ends. All models extend to an extra long 62" in length.





■ Henry Heller 2" wide sublimation printed straps with micro fiber reinforced ends. All models extend to an extra long 62" in length.



HSUB2-40

HSUB2-41

HSUB2-25

HSUB2-24

HSUB2-42

HSUB2-38

HSUB2-32



Don't forget that not only are you getting fantastic official US Army licensed designs, but with your purchase you are providing direct financial support to the Army Trademark Licensing Program! By law 100% of all licensing revenue is devoted to U.S. Army Morale, Welfare, and Recreation programs. These programs have an enormous impact on the lives of active U.S. Army personnel, veterans, and their families.

By federal law, licensing fees paid to the U.S. Army for the use of its trademarks provide support for the Army Trademark Licensing Program, and net licensing revenue is devoted to U.S. Army Morale, Welfare and Recreation programs. U.S. Army name, trademarks and logos are protected under federal law and used under license by OMG Music.



HSUB2
-USA1

HSUB2
-USA2

HSUB2
-USA3

HSUB2
-USA4

HSUB2
-USA5

HSUB2
-USA6

HSUB2
-USA7

HSUB2
-USA8



Named one of the best global licenses by License! Global Magazine, The U.S. Army brand has an 85% unaided brand awareness among the general population and spends over \$200 million annually on television, print, and online advertising campaigns. With over 750,000 active soldiers, 23 million+ veterans, and 5 million+ members of active military families, the U.S. Army brand has a built in demand for products that is unequalled.



HCOT2E USA-CAM HCOT2E USA-CAM2 HCOT2E USA-CAM3 HCOT2E USA-BLK HCOT2E USA-GRN



By federal law, licensing fees paid to the U.S. Army for the use of its trademarks provide support for the Army Trademark Licensing Program, and net licensing revenue is devoted to U.S. Army Morale, Welfare and Recreation programs. U.S. Army name, trademarks and logos are protected under federal law and used under license by OMG Music.



■ Henry Heller 2" wide Matador Jr. series Inca patterned guitar straps with doubled suede ends. Adjustable to a max 52" in length.



HPSE-04



HPSE-01



HPSE-03



HPSE-02



HPSE-05



■ Henry Heller Artist series introducing David Hale, owner of Love Hawk Studio in Athens, GA. 2" natural cotton printed with a David Hale design. The strap has leather ends and adjusts to 55" in length.





GSU-PD1



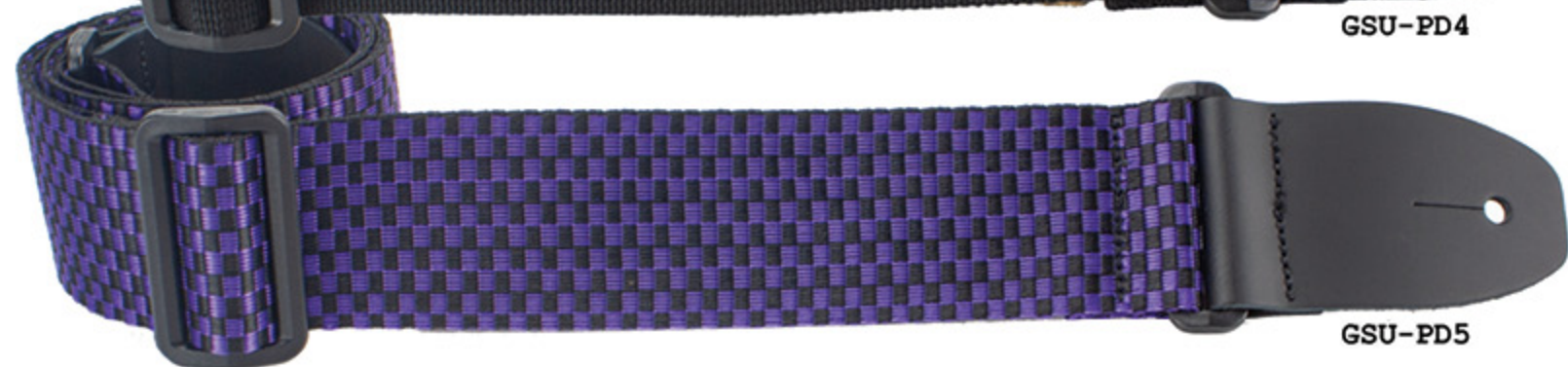
GSU-PD2



GSU-PD3



GSU-PD4



GSU-PD5



■ Henry Heller Artist series introducing David Hale, owner of Love Hawk Studio in Athens, GA. 2" Deluxe cotton strap with an Embroidered David Hale Design. This strap adjusts to 66" in length.



HDH-01



HDH-02



HDH-03



HDH-04



■ Henry Heller Artist series introducing David Hale, owner of Love Hawk Studio in Athens, GA. 2" Deluxe cotton strap with an Embroidered David Hale Design. This strap adjusts to 66" in length.



HDH-07



HDH-08



HDH-09



HDH-10



■ Henry Heller
2" basic cotton guitar strap
with yin yang and cross
embroidery designs.
Adjustable from 36" to 66"





■ Henry Heller
2" basic cotton guitar strap
with ALIEN and SUGAR SKULL
embroidery designs.
Adjustable from
36" to 66".



HCOT2EAL-BLK



HCOT2EAL-PUR



HCOT2ESS-BLK



HCOT2ESS-SKY



HCOT2ESS-RED



■ Basic leather guitar strap with finished stitch. Available in 2", 2.5" and 3.5". Adjustable from 44" to 51.5"

HBL2-BLK-BLK
HBL25-BLK-BLK
HBL35-BLK-BLK

HBL2-BLK-WHT
HBL25-BLK-WHT
HBL35-BLK-WHT

HBL2-BRN-RED
HBL25-BRN-RED
HBL35-BRN-RED

■ Henry Heller 2" and 2.5" wide single ply black premium leather.

HPL2-BLK
HPL25-BLK



■ Guitar straps USA
commodity leather straps
bought in bulk with
huge discounts passed on
to you.



GSU-BL-BLK

GSU-BL-BRN

GSU-GL-BLK

GSU-GL-CHC

GSU-GL-SND





- 2" nylon seatbelt webbing guitar straps with leather ends all of which can have your customized store logo.

Adjustable from
36" to 66"

 **AVAILABLE FOR
CUSTOM IMPRINT**

- 2" seatbelt guitar strap with deluxe garment leather sewn on ends.

Adjustable from
36" to 66"



HSBL2D-BLK



HSBL2-BLK



HSBL2-SLV



HSBL2-PNK



HSBL2-BLU



HSBL2-RED



HSBL2-PUR



■ 2" woven cotton guitar straps with leather ends all of which can have your customized store logo.
Adjustable from 36" to 66"

 **AVAILABLE FOR
CUSTOM IMPRINT**



HCOT2-BLK



HCOT2-NAT



HCOT2-GRN



HCOT2-NAV



HCOT2-RED



HCOT2-BRN



HCOT2-BRG



HCOT2-SKY



HCOT2-FUS



HCOT2-BLU



HCOT2-ORG



HCOT2-TAN



HCOT2-PUR



■ 2" polypropylene guitar straps with leather ends all of which can have your customized store logo.



AVAILABLE FOR
CUSTOM IMPRINT



HPOL-BLK



HPOL-RED



HPOL-NAV



HPOL-BRN



HPOL-PNK



HPOL-BRG



HPOL-TAN



HPOL-RBW



HPOL-PUR



HPOL-WHT



HPOL-YEL



HPOL-GRY



HPOL-BLU



HPOL-GRN



HPOLM-BLK



HPOLM-ORG



HPOLM-YEL



HPOLM-WHT



HPOLM-TEA



HPOLM-TAN



HPOLM-SVR



HPOLM-GRN

■ 2" polypropylene
with microfiber
ends.
Adjustable from
36" to 66"



HPOLM-BRN



HPOLM-PUR



HPOLM-RED



HPOLM-RBW



HPOLM-PNK



HPOLM-BRG



HPOLM-NAV



HPOLM-BLU



■ Henry Heller canvas ukulele bags available in soprano size and a concert / tenor hybrid model that fits both sizes. Available in Dark Sand and Pacific Blue as pictured.

HPG-US-BLU
HPG-UCT-BLU

HPG-US-SND
HPG-UCT-SND



■ Henry Heller
Peruvian Matador
series ukulele bags
in both Soprano and
a concert / tenor
size.



— BACK SIDE —

HPG-US-01 HPG-US-02 HPG-US-03 HPG-US-04 HPG-US-05
HPG-UCT-01 HPG-UCT-02 HPG-UCT-03 HPG-UCT-04 HPG-UCT-05

■ Henry Heller Peruvian Andean and Inca pattern Ukulele straps
with rustic suede ends - adjusts to a max length of



HP-UKE03

HP-UKE02

HP-UKE04



■ 1.5" wide Henry Heller ukulele / kid sized straps in groovy beachy colors and designs.



■ Junior guitar straps. 1.5" poly with leather ends.



■ Capri Mandolin Leathers.
Adjustable to 46.5" long.



■ Mandolin Suedes.
Adjustable to 46.5" long.



■ Henry Heller
3/4" Baxter boot leather
mandolin / ukulele strap.
Adjustable from
34" to 50".

HMANLDX-BLK

HMANLDX-BRN



- Mandolin straps available in bolo braids, flat braids and interesting linked leather.
- Also Available For Acoustic Guitar



HERB-BRN



HERB-BLK



HBOLO-BLK



HBOLO-BRN



HMAN-BTK



HMAN-BTN



■ Henry Heller 2.5" wide Capri suede banjo straps backed with a thick layer of deluxe velvety sand suede and heavy duty chrome closed hooks.

HSBJ-BLK

HSBJ-CHC

HSBJ-RST

HSBJ-BRN



■ Henry Heller 2.5" wide Capri leather banjo straps backed with a thick layer of deluxe velvety sand suede and heavy duty chrome closed hooks.



HLBJ-BLK



HLBJ-VBN



HLBJ-CHC



■ Henry Heller
2" wide
cotton banjo
straps with
strong
swivel hooks.
Max length
is 62".



■ Henry Heller
2" wide
cotton banjo
straps with
very heavy
duty metal
hooks.
Max length
is 62".



■ Heller Vintage series banjo straps with very heavy duty metal hooks. Adjusts to a max length of 62".





**HOT NEW
MODELS!!!**



HSAXC-BLK



HSAXC-BLU



HSAXN-BLK

■ Henry Heller
cotton and
neoprene
saxophone
straps



■ THE ROCK SLIDE®



POLISHED NICKEL

RK-TRS-SN
TRS-MN
TRS-LN



AGED NICKEL

RK-SMP-SN
RK-SMP-MN
SMP-LN



POLISHED BRASS

RK-TRS-SB
TRS-MB
TRS-LB
TRS-XLB



AGED BRASS

RK-SMP-SB
SMP-MB
SMP-LB
SMP-XLB



■ THE ROCK SLIDE®



GREEN GLASS
RK-GRS-MG



AMBER
RK-GRS-MA



ROCKSLIDE GLASS
RK-GRS-SC
RK-GRS-MC
RK-GRS-LC
RK-GRS-XLC



■ THE ROCK SLIDE®



BALLTIP
RK-BTRS-SB
BTRS-MB
BTRS-LB



AGED BALLTIP
RK-BTRS-SMP-SB
BTRS-SMP-MB
BTRS-SMP-LB



ARIEL POSEN AGED
RK-SMP-APS



ARIEL POSEN POLISHED
RK-TRS-APS



JOEY LANDRETH AGED
RK-SMP-JL



JOEY LANDRETH POLISHED
RK-TRS-JLF



TYRO

HIGHLIGHTS:

Our entry-level Tyro ukuleles are almost irresistible. These beautiful Sapele instruments are a great introduction to our ukulele lineup. Top choice for anyone on a budget looking for a quality instrument.

- *Open Geared Tuners
- *ABS Nut & Saddle
- *No Gig Bag

LAMINATE SAPELE
BODY

BLACKWOOD
FRETBOARD

GHS STRINGS

WALNUT BRIDGE

ABS NUT &
SADDLE

OPEN GEARED
TUNERS





PIONEER

HIGHLIGHTS:

One of our most popular ukuleles the Pioneer Series. Whether being featured in music videos or leading campfire sing-a-longs, our pioneer ukulele will definitely fit the bill.

- *Chrome Die-Cast Tuners
- *Bone Nut & Saddle
- *Aquila Strings
- *7mm Padded gig bag

LAMINATE SAPELE BODY

RICHLITE FRETBOARD

AQUILA STRINGS

CHROME DIE-CAST TUNERS

RICHLITE BRIDGE

BONE NUT & SADDLE





REDFORD

HIGHLIGHTS:

Our all-new Redford ukulele features our stunning scepter red hue paired with white bindings.

- *Translucent Scepter Red
- *White Bindings
- *Aquila Strings
- *7mm Padded Gig Bag

LAMINATE
MAHOGANY BODY

RICHLITE FRETBOARD

WHITE BINDING

AQUILA STRINGS

CHROME DIE-CAST
TUNERS

RICHLITE BRIDGE

BONE NUT & SADDLE





BLUFORD

HIGHLIGHTS:

The Bluford ukulele features a stunning blue hue paired with mahogany bindings that complete this model's irresistible charm.

- *Purple Heart Wood Fretboard
- *Mahogany Bindings
- *Bridge Pins
- *7mm Padded Gig Bag

LAMINATE
MAHOGANY BODY

MAHOGANY BINDINGS

CHROME DIE-CAST
TUNERS

PURPLE HEART WOOD
FRETBOARD

AQUILA STRINGS

PURPLE HEART
WOOD BRIDGE

BONE NUT & SADDLE





ORIGINAL

HIGHLIGHTS:

This beautiful instrument is crafted from a highly figured laminate mahogany, finished with traditional Hawaiian rope bindings and etched rosette.

- *Hawaiian Rope Binding
- *Etched Rosette
- *Highly Figured Mahogany
- *7mm Padded Gig Bag



LAMINATE
MAHOGANY BODY

HAWAIIAN ROPE
BINDINGS

CHROME DIE-CAST
TUNERS

RICHLITE FRETBOARD

AQUILA STRINGS

RICHLITE BRIDGE

BONE NUT & SADDLE





AURORA

HIGHLIGHTS:

The Aurora ukulele features highly figured laminate koa producing a voice with an exceptionally smooth balance and a dash of top-end chime.

- *Maple Bindings & Rosette
- *Purple Heart Wood Fretboard
- *Highly Figured Koa
- *7mm Padded Gig Bag

LAMINATE
KOA BODY

PURPLE HEART WOOD
FRETBOARD

MAPLE BINDING &
ROSETTE

AQUILA STRINGS

PURPLE HEART
WOOD BRIDGE

CHROME DIE-CAST
TUNERS

BONE NUT & SADDLE





SIERRA

HIGHLIGHTS:

Our all-new Sierra ukulele features a solid cedar top with a beautifully inlaid Koa rosette. This instrument has a tonewood blend that provides a smooth, low-end warmth.

- *Solid Cedar Top
- *Rosewood Bindings
- *Koa Rosette
- *7mm Padded Gig Bag





ROCK ROOTS

HIGHLIGHTS:

Our Rock Roots ukulele adds more warmth to your tone. This full solid mahogany ukulele provides a smooth and balanced attack. Rosewood bindings and a herringbone rosette add an old school vintage vibe.

- *Solid Mahogany Instrument
- *Rosewood Bindings
- *Herringbone Rosette
- *7mm Padded Gig Bag

SOLID
MAHOGANY BODY

PURPLE HEART WOOD
FRETBOARD

ROSEWOOD BINDINGS

AQUILA STRINGS

HERRINGBONE
ROSETTE

PURPLE HEART
WOOD BRIDGE

CHROME DIE-CAST
TUNERS

BONE NUT & SADDLE





KOA

HIGHLIGHTS: The premium choice for the ukulele player ready for an instrument as unique as their own sound. A beautifully crafted all solid Koa body, Ebony fretboard, and fluorocarbon strings produce a wonderful rich tone.

- *Solid Koa Instrument
- *Ebony Fretboard
- *Fluorocarbon Strings
- *24mm Padded Gig Bag
- *Strap Buttons

SOLID KOA BODY

EBONY FRETBOARD

FLUOROCARBON STRINGS

EBONY BRIDGE

OPEN GEARED BLACK & GOLD TUNERS

BONE NUT & SADDLE





**HOT NEW
MODELS!!!**

Henry Heller

SHAKA Ukuleles

Available in 21" Soprano Ukulele
Great for beginners and kids.
Laminated basswood body with a
maple neck and composite fretboard.

Scale Length 13" (33cm)
Nut Width 1.38"
Tuning G4-C4-E4-A4

Specifications:

Top, Sides and Back:
Laminated Basswood
Neck: Solid Maple
String: Nylgut Strings
Machine Head: Open tuner
w/plastic buttons
Nut & Saddle: Plastic
Fingerboard & Bridge: Composite
Frets: Copper w/ Decal inlay dots
Binding: None
Bridge: Tie Bridge
Finish: Matte
Frets: 12



■ Giving you a hand
with playing happy
music. The true
aloha spirit of
friendship - Shaka
Ukuleles
Available in three
entry level
Soprano models:

SH-BLU
SH-GRN
SH-RED



- Sherrin's Threads 1" ukulele straps with Hawaiian themed fabric made in sunny California, USA.



ST-2104

ST-2110

ST-2113

ST-2114

ST-2116

ST-2117

ST-2118

- Sherrin's Threads 1.5" Ukulele straps with Hawaiian themed fabric made in sunny California, U.S.A.



ST-15728

ST-15744

ST-15747

ST-15746

- Sherrin's Threads 2" Ukulele straps with Hawaiian themed fabric made in sunny California, U.S.A.



ST-RN1602



LEATHER
UKULELE
PICKS



HGB-E2

■ A closer look at the Henry Heller HGB-E2 level 2 gig bag series.



Henry Heller

HGB Level 2 series gig bag range that the dealers have known to love in its 5th generation in 8 years. The deluxe mid-priced 2019 version of this bag model comes upgraded with:

- * new for 2019 combined 30mm of closed cell high density padding
- * new for 2019 thick black plush lining throughout the interior
- * sewn in string guards
- * a sewn in velcro neck stabilizer
- * deluxe large double zippers
- * 3" wide adjustable padded back pack straps
- * a soft hand padded carrying handle with leather binding
- * a front facing matching deluxe handle we like to call the subway handle for carrying the bag upright
- * two smart styled accessory pockets
- * handy bonus d-ring sewn to the upper back of the bag for hanging purposes.

inside dims:

at the widest section of the lower bout

HGB-D2	44 7/8" X 17 1/4"
HGB-JD2	44" X 18"
HGB-C2	42 1/2" X 14 1/4"
HGB-AE2	44" X 17"
HGB-E2	42 1/4" X 14 7/8"
HGB-B2	48 1/4" X 14 1/4"



HGB-D2
DELUXE
ACOUSTIC
BAG



HGB-C2
DELUXE
CLASSICAL
BAG



HGB-B2
DELUXE
BASS
BAG



HGB-E2
DELUXE
ELECTRIC
BAG



HGB-AE2
DELUXE
335
BAG



- Other Bag models available in the Level 1 series are:
HGB-D1 Dreadnaught
HGB-B1 Bass
HGB-C1 Classical
HGB-E1 Electric
(as pictured)
HGB-BJ1 Banjo
HGB-M1 Mandolin
HGB-3Q1 3/4 parlor size

- The extra padding and pocket space you need in the best mid-range bag we could design.

- 20 mm of closed cell foam
- Soft hand cloth interior
- Gusseted accessory pocket
- Large deluxe double zippers
- Adjustable back pack straps
- Padded carry handle
- Clever sewn in d-ring for hanging purposes

HGB-E1



HGB-E88

- Other Bag models available in the 88 series are:
- HGB-D88 Dreadnaught
 - HGB-B88 Bass
 - HGB-C88 Classical
 - HGB-E88 Electric as pictured
- The best entry level bag we could put together with features where they count.
- 12 mm of closed cell foam
 - Soft interior
 - Padded carry handle
 - Adjustable back pack straps
 - Deluxe double zippers
 - Roomy accessory pocket

■ Headphone Bag



HGB-HP1



HGB-DB2
DELUXE BASS BAG
TO FIT 2 BASSES

HGB-DE2
DELUXE ELECTRIC BAG
TO FIT 2 GUITARS

■ Sheet Music Bag



HGB-SM1



- Henry Heller standard well padded two compartment cymbal bag with dividers. Made for 24" cymbals and smaller.



HGB-CY1

- Henry Heller extra heavy duty deluxe two compartment cymbal bag with dividers and an accessory pocket. Made for 24" cymbals and smaller.



HGB-CY2

- Henry Heller



HGB-ST1

HGB-ST2

- HGB-UT1
Henry Heller ukulele Tenor bag. Fully padded with combined 10mm of closed cell foam, a deluxe handle, a flat zippered accessory pocket and a shoulder sling strap. Available in these other three models:
HGB-UC1 Concert Ukulele
HGB-US1 Soprano Ukulele
HGB-UB1 Baritone Ukulele



Please allow us to customize these bags with your store logo!!!



■ 6 piece pack contains 1 of each pick.

■ 24 piece BULK bag contains 4 of each pick.

Pick packs available in medium and heavy gauge only.

■ Alchemy Guitar Picks : SKULLS

AP1M 6pc in Medium Gauge (.71mm)
AP1M-B 24pc in Medium Gauge (.71mm)
AP1H 6pc in Heavy Gauge (.96mm)
AP1H-B 24pc in Heavy Gauge (.96mm)



■ 6 piece pack contains 1 of each pick.

■ 24 piece BULK bag contains 4 of each pick.

Pick packs available in medium and heavy gauge only.

■ Alchemy Guitar Picks : ALCHEMY ICONS

AP2M 6pc in Medium Gauge (.71mm)
AP2M-B 24pc in Medium Gauge (.71mm)
AP2H 6pc in Heavy Gauge (.96mm)
AP2H-B 24pc in Heavy Gauge (.96mm)



■ 6 piece pack contains 1 of each pick.

■ 24 piece BULK bag contains 4 of each pick.

Pick packs available in medium and heavy gauge only.

■ Alchemy Guitar Picks : GOTH GIRL

AP3M 6pc in Medium Gauge (.71mm)
AP3M-B 24pc in Medium Gauge (.71mm)
AP3H 6pc in Heavy Gauge (.96mm)
AP3H-B 24pc in Heavy Gauge (.96mm)



■ 6 piece pack contains 1 of each pick.

■ 24 piece BULK bag contains 4 of each pick.

Pick packs available in medium and heavy gauge only.

■ Alchemy Guitar Picks : PUNK SKULLS

AP4M 6pc in Medium Gauge (.71mm)
AP4M-B 24pc in Medium Gauge (.71mm)
AP4H 6pc in Heavy Gauge (.96mm)
AP4H-B 24pc in Heavy Gauge (.96mm)

■ Henry Heller Instrument Stands



HUS1



HGS1

■ GORILLA SNOT Drumstick and Guitar Pick Grip



GSJ



Classic Celluloid

TCC351* 12PC ASST. PICK PACK
TNVC* 12PC ASST. PICK TIN
RVC351* 72PC REFILL BAG
VC351 432PC PICK KIT

*Specify Gauge
Thin .46mm
Medium .71mm
Heavy .96mm



BLACK WHITE TURQUOISE CONFETTI ABALONE SHELL

Designer Celluloid

TDC351* 12PC ASST. PICK PACK
TNVD* 12PC ASST. PICK TIN
RVD351* 72PC REFILL BAG
VD351 432PC PICK KIT

*Specify Gauge
Thin .46mm
Medium .71mm
Heavy .96mm



MOTHER OF PEARL BLUE PEARL RED PEARL PURPLE PEARL BLACK PEARL GREEN PEARL

Wild Celluloid

TWC351* 12PC ASST. PICK PACK
RWD351* 72PC REFILL BAG
VW351 432PC PICK KIT

*Specify Gauge
Thin .46mm
Medium .71mm
Heavy .96mm



CHECKER BOARD COSMIC PEARL ZEBRA PEARL JUNGLE CAMO RAINBOW MULTI COLORED

Shell Celluloid

TPG351* 12PC ASST. PICK PACK
TNVS* 12PC ASST. PICK TIN
RG351* 72PC REFILL BAG
11-351 432PC PICK KIT

*Specify Gauge
Thin .58mm
Medium .84mm
Heavy .96mm
X-Heavy 1.21mm



.46mm T .58mm TM .71mm M .84mm MH .96mm H 1.21mm XH

Shell Celluloid NON-STANDARD SHAPES

RG* 72PC REFILL BAG

*Specify Gauge
Thin .58mm
Medium .84mm
Heavy .96mm



358 SHAPE 346 SHAPE 355 SHAPE



■ SNARLING DOGS Brain Picks

TSDB351*	12PC PICK PACK
TNSDB351*	12PC PICK TIN
RSDB351*	72PC REFILL BAG
SDB351	432PC PICK KIT
*Specify Gauge	
Thin	.53mm
T/Medium	.60mm
Medium	.73mm
M/Heavy	.88mm
Heavy	1.00mm
X-Heavy	1.14mm



■ Pro-Grip Brites

TPGB351*	12PC PICK PACK
RPGB351*	12PC REFILL BAG
PGB351	432PC PICK KIT
*Specify Gauge	
Thin	.50mm
T/Medium	.60mm
Medium	.73mm
M/Heavy	.88mm
Heavy	1.00mm
X-Heavy	1.21mm



■ Formula Delrex

TPD351*	12PC PICK PACK
TNDX*	12PC PICK TIN
RD351*	72PC REFILL BAG
D351	432PC PICK KIT
*Specify Gauge	
Thin	.50mm
T/Medium	.60mm
Medium	.73mm
M/Heavy	.88mm
Heavy	1.00mm
X-Heavy	1.14mm



■ Formula Delrex Non-Standard Shapes

RG351*	72PC REFILL BAG
*Specify Gauge	
Thin	.50mm
T/Medium	.60mm
Medium	.73mm
M/Heavy	.88mm
Heavy	1.00mm
X-Heavy	1.14mm



■ Pro Plec

PRO-6*	6PC PICK PACK
TNPRO*	6PC PICK TIN
PRO*	12PC REFILL BAG
PRO6	432PC PICK KIT
*Specify Shape	
Available in 1.5mm ONLY	



All Brain Picks®, Pro-Grip Brites and Formula Delrex Picks are only available in gauge specific colors.



■ Thumbpicks

R6371 MD*	6PC PICK PACK
R371 MD*	12PC PICK PACK
R6373 LG*	6PC PICK PACK
R373 LG*	12PC PICK PACK
2012AT	72PC REFILL BAG

MD = Medium

LG = Large

*Specify Color

Black / White / Shell / Multi



■ Thumbpicks

R6371 MD DXC	6PC ASST. PICK PACK
R371 MD DXC	12PC ASST. PICK PACK
R6373 LG DXC	6PC ASST. PICK PACK
R373 LG DXC	12PC ASST. PICK PACK
2012AT DXC	72PC ASST. REFILL BAG

MD = Medium

LG = Large



■ Fingerpicks

R6374 MD*	6PC PICK PACK
R374 MD*	12PC PICK PACK
R6374 LG*	6PC PICK PACK
R374 LG*	12PC PICK PACK
2012AF	72PC REFILL BAG

MD = Medium

LG = Large

*Specify Color

Black / White / Shell / Multi



■ Fingerpicks Deluxe Colors

R6374 LG DXC	6PC ASST. PICK PACK
R374 LG DXC	12PC ASST. PICK PACK
2012AF DXC	72PC ASST. REFILL BAG

LG = Large



■ Thumb And Finger Acrylic Kit

2072TF 72PC

MIX OF THUMB AND FINGERPICKS

BLACK / WHITE / SHELL / MULTICOLORED





■ Classic And Designer

Celluloid Tin Box Display

TNVC DISP
60 PICK TINS

CONTAINS:

10 THIN
10 MEDIUM
10 HEAVY
OF CLASSIC AND
DESIGNER
CELLULOID TINS

■ Classic Celluloid

TNVC* 12PC ASST. PICK TIN
VC351 432PC PICK KIT
(MIX OF ALL GAUGES)

*Specify Gauge
.46mm / .71mm / .96mm

■ Designer Celluloid

TNVD* 12PC ASST. PICK TIN
VD351 432PC PICK KIT
(MIX OF ALL GAUGES)

*Specify Gauge
.46mm / .71mm / .96mm



■ Shell Celluloid

Tin Box Display

TNVS DISP
60 PICK TINS

CONTAINS:

10 THIN
20 MEDIUM
20 HEAVY
10 X-HEAVY

■ Shell Celluloid

TNVS* 12PC ASST. PICK TIN
11-351 432PC PICK KIT
(MIX OF ALL GAUGES)

*Specify Gauge
.46mm / .71mm / .96mm / 1.21mm

■ Shell Celluloid

16 PRO ASST 504PC PRO ASSORTMENT
(MIX GAUGES OF
CELLULOID PICKS &
SHELL CELLULOID
THUMB & FINGERPICKS)

■ Formula Delrex

Tin Box Display

TNVDX DISP
60 PICK TINS

CONTAINS:
10 OF EACH GAUGE

■ Formula Delrex

TNDX* 12PC PICK TIN
D351 432PC PICK KIT
(MIX OF ALL GAUGES)

*Specify Gauge
.50mm / .60mm / .73mm
.88mm / 1.00mm / 1.14mm

■ SNARLING DOGS®

Brain Picks® Tin Box Display

SDBTB351 DISP
60 PICK TINS

CONTAINS:
10 OF EACH GAUGE

■ SNARLING DOGS® Brain Picks®

TNSDB351* 12PC PICK TIN
SDB351 432PC ASST. PICK KIT
(MIX OF ALL GAUGES)

*Gauge Specific Colors
.53mm / .60mm / .73mm
.88mm / 1.00mm / 1.14mm

■ Pro Plec

Tin Box Display

PRO6TD DISP
60 PICK TINS

CONTAINS:
10 OF EACH SHAPE

■ Pro Plec

TNPRO* 6PC PICK TIN
PRO6 432PC PICK KIT
(MIX OF ALL GAUGES)

*Specify Shape
Available in 1.5mm ONLY

■ Pro-Grip Brites

PGB351
432PC PICK KIT
(MIX OF ALL GAUGES)

■ Christian

CHR1
432PC ASST. PICK KIT
(MIX OF ALL GAUGES)



Deluxe Maintenance Kit featuring CRUZ TOOLS

DMK1

- 1 Cruz Multi Tool
- 1 Cruz String Cutter
- 1 Microfiber Cloth
- 1 Guitar Polish 4oz.
- 1 String Winder
- 6 Guitar Picks

Deluxe Guitar Care Kit GCKD

- 1 Bottle String Cleaner
- 1 Bottle Guitar Polish
- 1 Bottle Lemon Oil
- 1 Cotton Polish Cloth



- DAPC1/12**
12" x 15"
Polish Cloth
100% Cotton
12pcs



- DAMF1/12**
12" x 15"
Microfiber Cloth
12pcs



Guitar Maintenance Kit GMK1

- 1 String Cutter
- 1 Allen Wrench Set
- 1 Screwdriver Set
- 1 Cotton Polish Cloth
- 1 Guitar Polish
- 1 String Winder
- 6 Guitar Picks



Acoustic Care Kit AC1

- 1 Cotton Polish Cloth
- 1 Guitar Polish
- 1 String Winder
- 6 Guitar Picks



- DAS2/12**
12pcs of 2oz.
String Cleaner
& Lubricant



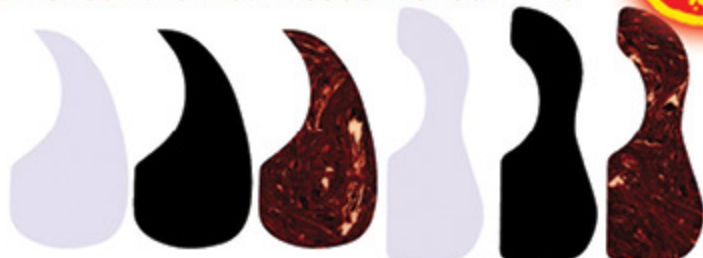
- DAL2/12**
12pcs of 2oz.
Lemon Oil
& Conditioner



- DAP4/12**
12pcs of 4oz.
Guitar Polish



PICKGUARDS FOR ACOUSTIC GUITARS



DN-376B-SM-CLR
DN-376B-SM-BLK
DN-376B-SM-SHL

DN-376B-LG-CLR
DN-376B-LG-BLK
DN-376B-LG-SHL

Clear
Black
Shell

■ **OMG Music D'Andrea's Acoustic Guitar Pickguards** are proudly "Made in the USA" and built to fit most standard acoustic guitars. Customize the look of your guitar with a D'Andrea Acoustic Guitar Pickguard, available in 3 colors and 2 different sizes. Proudly Made in USA

PICKGUARDS FOR STRATOCASTERS



DN-DPP-ST-GOS

PICKGUARDS FOR JAZZ BASS



DN-DPP-JB-GOS

PICKGUARDS FOR TELECASTERS



DN-DPP-TL-GOS

PICKGUARDS FOR P BASS



DN-DPP-PB-GOS



■ Pickguards for Stratocasters, Telecasters, Jazz Bass, and P Bass are available in 15 assorted sparkles and pearloid colors.



SpiderCapo™

■ Standard

- Capo each string individually
- Make hundreds (945) of open string tunings without de-tuning your guitar
- Full Capo with Fine Tuning per String
- Fits all standards 6 string acoustic steel, nylon classical & electric guitars
- Simple tunings for EZ beginning guitar
- Unlimited application for all music styles, genres, ethnicities etc.
- Great tool for singer/songwriters
- Aid for hand disabilities
- Great features like changing tunings on-the-fly and playing behind the capo
- Packaging includes popular tunings and set up instructions.
- harmonics on open strings (and fingered notes still sound) *with Harmonik Glove accessory, sold separately
- Only capo with organic material (leather) that contacts the neck of the guitar.
- Lightest capo on the market. Weighs 1 oz. You can't even feel it on the guitar

DN-SPDHG SPIDERCAPPO HARMONIC GLOVES
DN-SPDMINI SPIDERCAPPO MINI
DN-SPDSTD SPIDERCAPPO STANDARD
DN-SPDXXL SPIDERCAPPO XXL
DN-311CAPO



DN-SPDMINI



DN-SPDHG



DN-SPDSTD



DN-SPDXXL



DN-311CAPO

■ Tone Pins

Enhance the look and sound of your acoustic guitar with these beautiful Tone Pins



DN-TP2A
Abalone Inlay Flat



DN-TP4T
Brass round with
Mother Of Pearl Dot



DN-TP3M
Mother of Pearl
Inlay Flat



DN-TP1B
Solid Brass Flat

■ Bridge Pin Set



DN-BPB
Black bridge pin set
with end pin



DN-BPW
White bridge pin set
with end pin

■ Strap Buttons



DN-EP2B
2pc pack
DN-EP24B
24pc pack

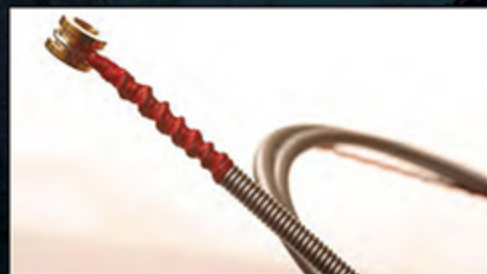


DN-EP2C
2pc pack
DN-EP24C
24pc pack



DN-EP2G
2pc pack
DN-EP24G
24pc pack

BASS GUITAR



SWING BASS 66 (Stainless Steel or Nickel Roundwound)

The most popular Roundwound bass string ever. Rotosound was the first string company to produce this kind of string. Introduced in 1962 it changed the sound of the instrument instantly. The favourite string of many players including Billy Sheehan, John Paul Jones and Geddy Lee. Available in all popular gauges and scale lengths. The stainless steel used to produce these strings is unique and nickel free, coupled with a highly secretive manufacturing process.

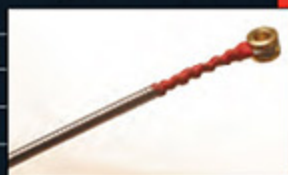
	C	G	D	A	E	B
4 String Sets						
RS 66LA	30	50	65	85		
FM 66 Funkmaster	30	50	70	90		
RS 66LB	35	55	70	90		
RS 66LC	40	60	75	95		
SM 66	40	60	80	100		
RS 66LD	45	65	80	105		
RS 66LE	50	70	85	110		
RS 66LF	45	65	85	105		
BS 66	43	65	80	110		
RS 66LH Drop Zone			65	80	105	130
RS 66LH+ Drop Zone+	85	105	135	175		
5 String Sets						
RS 665LB	35	55	70	90	120	
RS 665LC	40	60	75	95	125	
SM 665	40	60	80	100	125	
RS 665LD	45	65	80	105	130	
6 String Sets						
SM 666	30	40	60	80	100	125
RS 666LC	30	40	60	75	95	125
RS 666LD	35	45	65	80	105	130
8 String Set						
RS 668	20	30	35	45		
	45	65	80	105		
Double Ball End - 4 and 5 String Sets						
RDB 66LC	40	60	75	95		
RDB 66LD	45	65	80	105		
RDB 665LD	45	65	80	105	130	
Non Standard Scale Lengths						
RS 66S (Short)	40	50	75	90		
RS 66M (Medium)	40	50	75	90		
RS 66EL (Extra Long)	45	65	80	105		
Nickel - 4 & 5 String Sets						
SM 66N	40	60	80	100		
RS 66LDN	45	65	85	105		
RS 66LN	45	65	80	100		
RS 665LDN	45	65	85	105	130	

BASS GUITAR

JAZZ BASS 77

Highly praised by Bass Player Magazine as their favourite Flatwound. Unique materials produce a very bright tone. Oasis, Steve Harris, Roger Waters and many others have all favoured this particular string over the years (Contain nickel).

	G	D	A	E	B
4 String Sets					
SM 77	40	60	80	100	
RS 77LD	45	65	85	105	
RS 77LE	50	75	95	110	
5 String Set					
RS 775LD	45	65	85	105	130
Non Standard Scale Lengths					
RS 77S (Short)	40	50	75	90	
RS 77M (Medium)	40	50	75	90	
RS 77EL (Extra Long)	45	65	85	105	



SH77

Steve Harris signature set. Steve's custom gauge flatwound set with his favourite West Ham colours on the silk ends. All he has ever used throughout his career (Contain nickel).

	G	D	A	E
SH 77	50	75	95	110



TRU BASS 88

Most famously heard on the Beatles album 'Abbey Road'. Super smooth with ultra low tension transforms any electric bass into a jazzy upright sound. Works great on fretless. Also works well with any kind of jazz, fusion, dub and reggae styles. Heard on 'Transformer' by Lou Reed, courtesy of Herbie Flowers.

	G	D	A	E	B
4 String Sets					
RS 88LD	65	75	100	115	
5 String Set					
RS 885LD	65	75	100	115	135
Non Standard Scale Lengths					
RS 88S (Short)	65	75	90	115	
RS 88M (Medium)	65	75	90	115	
RS 88EL (Extra Long)	65	75	100	115	



NEW FACTORY FRESH FOIL POUCH PACKAGING AND COLOURED BALL ENDS

BASS GUITAR



PSD BASS 99 (Piano String Design - Stainless Steel Roundwound)

The ultimate in power, sustain and brightness. Contact-core design improves string movement. Designed to fit any Bridge styles. Favoured by John Paul Jones.

	G	D	A	E	B
4 String Sets					
RS 99LD	45	65	85	105	
5 String Set					
RS 995LD	45	65	85	105	130



ROTO BASS (Nickel Roundwound)

Nickel on steel, extra bright, unsilken.

	G	D	A	E	B
4 String Sets					
RB 35	35	55	75	95	
RB 40	40	60	80	100	
RB 45	45	65	85	105	
RB 50	50	70	90	110	
5 String Sets					
RB 40-5	40	60	80	100	125
RB 45-5	45	65	85	105	130



NEW FACTORY FRESH FOIL POUCH PACKAGING AND COLOURED BALL ENDS

BASS GUITAR

NEXUS BASS

Take the worlds most famous maker of electric bass strings, look for a high energy rich in mid-tones alternative to steels with high presence, add a silky smooth black polycoat dressing over a Type 52 wrap and you have Nexus Bass - the string with extra life to suit the player for all seasons.

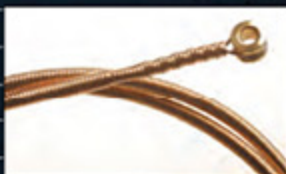
	G	D	A	E	B
4 String Sets					
NXB 40	40	60	80	100	
NXB 45	45	65	85	105	
Low B					
NXBL 130	-	-	-	-	130



BRONZE BASS 44

Phosphor bronze wound acoustic bass strings deliver a deep bright tone for acoustic bass guitars, available in 4 and 5 string sets.

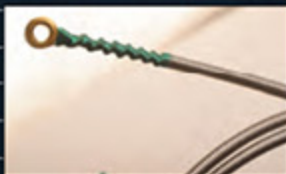
	G	D	A	E	B
4 String Sets					
RS 44LC	40	60	80	100	
RS 44LD	45	65	85	105	
5 String Set					
RS 44SLD	45	65	85	105	130



SOLO BASS 55

The original 'pressure wound' stainless steel bass string designed in the mid 70's. Due to rolling, mass is retained and therefore brightness. Solo Bass strings eliminate finger noise, reduce fret wear, work well on fretless basses and excel in the studio.

	G	D	A	E	B
4 String Sets					
SM 55	40	60	80	100	
RS 55LD	45	65	85	105	
5 String Set					
RS 55SLD	45	65	85	105	130



ELECTRIC GUITAR



ROTOS (Nickel on Steel)

Developed in conjunction with some of the worlds top artists, these unique sets deliver a smooth powerful tone that lasts while other strings have long gone dead. Superb brilliance and strength make Rotos the first choice for the professional. Available in all the popular gauges, 12 string sets, 7 and 8 string sets and custom made singles for the discerning tone-head! Please note: w denotes wound string

	E	B	G	D	A	E	B	F#
R8 Roto Greens - Extra Light	8	11	14	22w	30w	38w	-	-
R9 Roto Pinks - Super Light	9	11	16	24w	32w	42w	-	-
RH9 Roto Orange - Hybrid Lt	9	11	16	26w	36w	46w	-	-
R10 Roto Yellows - Regular	10	13	17	26w	36w	46w	-	-
RH10 Roto Blues - Hybrid	10	13	17	30w	42w	52w	-	-
R11 Roto Reds - Medium*	11	14	18	28w	38w	48w	-	-
R12 Roto Purples - Med Hvy*	12	16	24w	32w	42w	52w	-	-
R13 Roto Greys - Heavy*	13	17	26w	34w	44w	54w	-	-
Extra Value Triple Packs with FREE STR Nylon Webbing Strap - NEW								
R9-31 Roto Pinks - Super Light	9	11	16	24w	32w	42w	-	-
R10-31 Roto Yellows - Regular	10	13	17	26w	36w	46w	-	-

7 String Sets

R9-7 7 String Set - Sup Light	9	11	16	24w	32w	42w	52w	-
R10-7 7 String Set - Regular	10	13	17	26w	36w	46w	56w	-
R11-7 7 String Set - Med*	11	14	18	28w	38w	48w	58w	-

8 String Set

R10-8 8 String Set - Regular	10	13	17	30w	42w	54w	64w	74w
-------------------------------------	----	----	----	-----	-----	-----	-----	-----

Double Decker Twin Packs

R9-2 Roto Pinks - Super Light	9	11	16	24w	32w	42w	-	-
R10-2 Roto Yellows - Regular	10	13	17	26w	36w	46w	-	-

12 String Sets

R30SL Double Six Sup Light	9	12	9	12	20w	26w	-	-
	9	12	20	26w	36w	46w	-	-

Custom Gauge Single Strings

NP 008-026 Plain Singles High Grade Plated Steel

NC 018-060 Covered Singles Nickel Plated Steel

Custom Gauge Singles Box

GB1 Contains 10 each NP 008 - NP 026

Contains 5 each NC 018 - NC 056

* Ideal for detuning

NEW FACTORY FRESH FOIL POUCH PACKAGING AND COLOURED BALL ENDS

ELECTRIC GUITAR

DARK ZONE CUSTOM GAUGE (Nickel on Steel)

Custom gauge nickel on steel electric guitar strings, designed for players who like a heavier tone, or use drop tunings.

Please note: w denotes wound string

	E	B	G	D	A	E
DZ10 Dark Zone Custom Gauge	10	13	18	36w	52w	60w



MICHAEL AMOTT SIGNATURE SET

A hybrid gauge set, designed to Michael's exact specifications.

Please note: w denotes wound string

	E	B	G	D	A	E
MAS11 Michael Amott Signature Set	11	15	18	32w	44w	59w



BRITISH STEELS (Stainless Steel - Nickel Free)

With high iron content ferritic stainless steel covers this set offers a clear, bright punchy sound, positive grip and plenty of twang!

Available in the following gauges:

	E	B	G	D	A	E
BS9	9	11	16	24w	32w	42w
BS10	10	13	17	26w	36w	46w
BS11	11	14	18	28w	38w	48w



PURE NICKELS (Nickel)

Our best 'top of the range electrics' yet comprising solid nickel covers, with exceptional magnetic response, volume, clarity and tone. Truly the creme-de-la-creme of guitar strings! Available in the following gauges:

	E	B	G	D	A	E
PN9	9	11	16	24w	32w	42w
PN10	10	13	17	26w	36w	46w
PN11	11	14	18	28w	38w	48w



TOP TAPE (Stainless Steel Ribbon)

Exceptionally smooth flatwounds ideal for fusion, jazz or to simply reduce finger noise in the studio.

	E	B	G	D	A	E
RS200	12	16	24w	32w	42w	52w



ACOUSTIC GUITAR

TRU BRONZE

Our alternative acoustic guitar string to the 92/8 series. Comprising 80/20 brass wire covers, these strings offer the resonant advantages of this material coupled with considerable clarity and tone, available in the following gauges:

	E	B	G	D	A	E
TB10	10	14	20w	28w	40w	50w
TB11	11	15	22w	30w	42w	52w
TB12	12	16	24w	32w	44w	54w

JUMBO KING

Our best selling acoustic string. 92/8 Phosphor Bronze wound Acoustic Guitar strings with superb warm tone, clarity and sustain. Favoured by such artists as John Renbourn and Bob Geldof. Available in five, six string gauges and one twelve string gauge.

	E	B	G	D	A	E
JK9	9	13	18	26w	38w	48w
JK10	10	14	20w	28w	40w	50w
JK11	11	15	22w	30w	42w	52w
JK12	12	16	24w	32w	44w	54w
JK13	13	17	26w	34w	46w	56w

Extra Value Triple Packs with FREE

STR Nylon Webbing Strap - NEW

JK10-31	10	14	20w	28w	40w	50w
JK11-31	11	15	22w	30w	42w	52w
JK12-31	12	16	24w	32w	44w	54w
JK13-31	13	17	26w	34w	46w	56w
JK30EL	10	14	8	12	18	28w
12 String Set	10	14	24w	30w	40w	48w

SUPER BRONZE

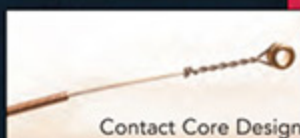
Originally known as Country Gold's, a great sounding acoustic string due to it's 'contact core' design, pioneered by Rotosound in 1974. This together with 92/8 covers offers long sustain and brightness. These strings will lower the action slightly. Available in three gauges for six string sets only.

	E	B	G	D	A	E
SB10	10	14	20w	28w	40w	50w
SB11	11	15	22w	30w	42w	52w
SB12	12	16	24w	32w	44w	54w

NEXUS ACOUSTIC

Take a great acoustic string from our JK range, give it a smooth polycoat dressing and you have 'Nexus Bronze' the string for the next generation of acoustic sound. It offers a unique tone of its own with the usual enriched highs giving way to softer gentle mid-tones with a smooth feel, longer life and tarnish prevention built in. Available in the following gauges:

	E	B	G	D	A	E
NXA10	10	14	20w	28w	40w	50w
NXA11	11	15	22w	30w	42w	52w
NXA12	12	16	24w	32w	44w	54w



Contact Core Design



CLASSICAL GUITAR



SUPERIA CLASSICAL GUITAR STRINGS

Both sets come with silver wound basses and nylon trebles. CL 1's have ballends whilst CL 2's are regular tie on sets. Ideal strings for classical guitars where a crisp bright tone is required.

CL 1 Superia (ball end - nylon, normal tension)

	E	B	G	D	A	E
CL1	28	32	40	29w	34w	42w



CL 2 Superia (tie on - nylon, normal tension)

	E	B	G	D	A	E
CL2	28	32	40	30w	36w	45w



Grade 1 Professional

Grade 1 'Superia Pro' classical guitar strings are manufactured to a high tension characteristic specifically designed for fingerstyle playing. The wound strings are Silver Plated Copper on a Nylon Core and the plain strings are high quality rectified Nylon.

CL 3 Superia Pro (Grade 1 Professional)

	E	B	G	D	A	E
CL3	28	32	40	30w	37w	46w



Grade 1 'Black n' Silver' classical guitar strings are manufactured to a normal tension characteristic specifically designed for fingerstyle playing. The wound strings are Silver Plated Copper on a Nylon Core and the plain strings are high quality rectified Black Nylon.

CL 4 Black n' Silver (Grade 1 Professional)

	E	B	G	D	A	E
CL4	28	32	40	30w	36w	45w

ORCHESTRAL INSTRUMENTS



RS 1000 STUDENT VIOLIN

Quality silver roundwound set for the beginner. Unsilked.

RS 1001	E	10
RS 1002	A	13
RS 1003	D	24
RS 1004	G	30



RS 2000 PROFESSIONAL VIOLA

Quality Monel flatwound set of four strings. Silked.

RS 2001	A	14
RS 2002	D	25
RS 2003	G	30
RS 2004	C	43



RS 4000 SUPERB DOUBLE BASS

A great set for Jazz and Rockabilly styles of playing. The A and E are Monel flatwound over copper on a tightly wound stranded nylon core. The G and the D strings are nylon on a tightly wound stranded nylon core. Super flexible and easy to play in all positions. Silked

RS 4001	G	84
RS 4002	D	105
RS 4003	A	87
RS 4004	E	104

Also available

RS 4005	High C	67
---------	--------	----

RS 6000 PROFESSIONAL VIOLIN

Quality Monel flatwound set of four strings. Silked

RS 6001	E	10
RS 6002	A	14
RS 6003	D	25
RS 6004	G	30



TRADITIONAL INSTRUMENTS

RS65



G BANJO
10 • 12 • 15 • 19(w) • 10
SWANEE - NICKEL WOUND LOOP END
G BANJO STRINGS

RS 65 - SWANEE G BANJO

High Quality nickel wound loop end 5 string banjo sets.

RS 651	D	10
RS 652	B	12
RS 653	G	15
RS 654	D	19w
RS 655	G	10

RS70



BOUZOUKI
11 • 11 • 14 • 14 • 11 • 24(w) • 15 • 30(w)
ATHENA - PHOSPHOR BRONZE LOOP END
BOUZOUKI STRINGS

RS 70 - ATHENA BOUZOUKI

High Quality phosphor bronze wound loop end 8 string bouzouki sets. Greek tuning. Scale length 43 inches.

RS 701	G	11
RS 702	G	11
RS 703	D	14
RS 704	D	14
RS 705	A	11
RS 706	A	24w
RS 707	E	15
RS 708	E	30w

RS75



TENOR BANJO
10 • 12 • 23(w) • 32(w)
MISSOURI - NICKEL WOUND LOOP END
TENOR BANJO STRINGS

RS 75 - MISSOURI TENOR BANJO

High Quality nickel wound loop end 4 string banjo sets.

RS 751	A	10
RS 752	D	12
RS 753	G	23w
RS 754	C	32w

RS 80 - TROUBADOUR MANDOLIN

High Quality phosphor bronze wound loop end 8 string mandolin sets.

RS 801	E	10
RS 802	E	10
RS 803	A	12
RS 804	A	12
RS 805	D	23w
RS 806	D	23w
RS 807	G	34w
RS 808	G	34w

RS 85 - LAGUNA UKULELE

Precision monofilament nylon ukulele sets. Hawaiian tuning. Scale length 14.5 inches.

RS 851	B	23
RS 852	F#	29
RS 853	D	29
RS 854	A	23

RS80



MANDOLIN
10 • 10 • 12 • 12 • 23(w) • 23(w) • 34(w) • 34(w)
TROUBADOUR - PHOSPHOR BRONZE
LOOP END MANDOLIN STRINGS

RS85



UKULELE
23 • 29 • 29 • 23
LAGUNA - MONOFILAMENT NYLON
UKULELE STRINGS





Distributed by
OMG Music
3893 W. State Road 47 Sheridan, IN 46069
www.omgmusic.com 800-675-2501